

BLCSELED Series 2', 3', 4' & 8' Covered Strips



Project:	
Type:	
Catalog #:	



STANDARD



The BLCSELED series is a group of 2', 3', 4', and 8' covered strip lights, which are designed as direct replacements for fluorescent strips. The BLCSELED series is designed to deliver general ambient lighting in a variety of indoor settings, including schools, offices, hospitals and stores, and is the perfect choice for both new construction and retrofits. This high-efficacy luminaire provides long-life and uniform illumination, as well as standard 0-10vdc dimming capability.

FEATURES

- Available in 3500k (warm/neutral white), 4000k (neutral white) and 5000k (cool white) color temperatures.*
- Long-life LEDs provide 122,000 hours of operation with at least 70% of initial lumen output (L_{70}).**
- BLCSELED2FT provides 2,348 luminaire lumens (117 lumens per watt, LPW) at 3500k; 2,600 luminaire lumens (130 LPW) at 4000k; and 2,432 luminaire lumens (122 LPW) at 5000k.*
- BLCSELED3FT provides 3,129 luminaire lumens (125 LPW) at 3500k; 3,250 luminaire lumens (130 LPW) at 4000k; and 3,334 luminaire lumens (133 LPW) at 5000k.*
- BLCSELED4FT provides 3,811 luminaire lumens (119 LPW) at 3500k; 4,224 luminaire lumens (132 LPW) at 4000k; and 4,256 luminaire lumens (133 LPW) at 5000k.*
- BLCSELED8FT provides 8,450 luminaire lumens (130 LPW) at 3500k; 8,580 luminaire lumens (132 LPW) at 4000k; and 8,645 luminaire lumens (133 LPW) at 5000k.*
- Uniform illumination with no visible LED pixelation.
- Universal 120-277 AC voltage (50-60Hz) is standard.
- 0-10vdc dimming capability is standard.
- Power factor > 0.90.
- Total harmonic distortion < 20%.
- Color rendering index > 80.
- Steel housing and acrylic lens.
- Easy installation in new construction or retrofit.

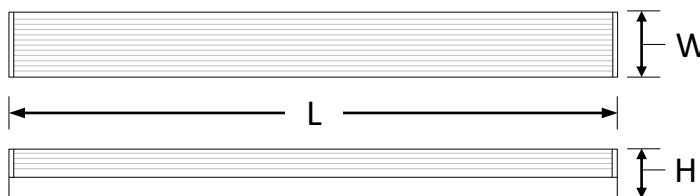
* Contact factory for other color temperatures and lumen packages.

** L_{70} hours are IES TM21-11 calculated hours.

WARRANTY & LISTINGS

- cULus approved for damp locations (-20°C to 50°C / -4°F to 122°F).
- DLC premium approved.
- Complies with FCC Part 15, Class A.
- Complies with IEEE C.62.41-1991, Class A input transient surge protection (2.5kV).
- Complies with IEC 61000-4-2 level 2 (4kV) electrostatic discharge (ESD).
- Complies with RoHS (Restriction on Hazardous Substances) requirements.
- 5-year warranty of all electronics and housing.

DIMENSIONS



	BLCSELED2FT	BLCSELED3FT	BLCSELED4FT	BLCSELED8FT
Length – L	26"	37"	48"	96"
Width – W	3 3/8"	3 3/8"	3 3/8"	3 3/8"
Height – H	3 1/2"	3 1/2"	3 1/2"	3 1/2"
Weight (lbs.)	4.1	5.1	6.2	13.8

ORDERING INFORMATION

Example: BLCSELED2FT-20W-35KMV-ET + BLCSELED2FT-WG-ET

Model	Color Temperature	Luminaire Lumens	Luminaire Watts	Lumens / Watt	Options (Order Separately)
BLCSELED2FT-20-35KMV-ET	3500k	2,348	20	117	BLCSELED2FT-WG-ET = Wire Guard (2 Foot)
BLCSELED2FT-20-4KMV-ET	4000k	2,600	20	130	
BLCSELED2FT-20-5KMV-ET	5000k	2,432	20	122	
BLCSELED3FT-25-35KMV-ET	3500k	3,129	25	125	BLCSELED3FT-WG-ET = Wire Guard (3 Foot)
BLCSELED3FT-25-4KMV-ET	4000k	3,250	25	130	
BLCSELED3FT-25-5KMV-ET	5000k	3,334	25	133	
BLCSELED4FT-32-35KMV-ET	3500k	3,811	32	119	BLCSELED4FT-WG-ET = Wire Guard (4 Foot)
BLCSELED4FT-32-4KMV-ET	4000k	4,224	32	132	
BLCSELED4FT-32-5KMV-ET	5000k	4,256	32	133	
BLCSELED8FT-65-35KMV-ET	3500k	8,450	65	130	
BLCSELED8FT-65-4KMV-ET	4000k	8,580	65	132	
BLCSELED8FT-65-5KMV-ET	5000k	8,645	65	133	

BLCSELED Series 2', 3', 4' & 8' Covered Strips



ELECTRICAL

Model	Color Temp.	CRI ¹	Luminaire Lumens	Luminaire Watts	Lumens Per Watt	Input Voltage ²	Input Current (A)			Power Factor	THD ³	L ₇₀ Hours ⁴
							120V	240V	277V			
BLCSELED2FT-20-35KMV-ET	3500k	> 80	2,348	20	117	120-277	0.16	0.08	0.07	> 90%	< 20%	122,000
BLCSELED2FT-20-4KMV-ET	4000k	> 80	2,600	20	130	120-277	0.17	0.08	0.07	> 90%	< 20%	122,000
BLCSELED2FT-20-5KMV-ET	5000k	> 80	2,432	20	122	120-277	0.16	0.08	0.07	> 90%	< 20%	122,000
BLCSELED3FT-25-35KMV-ET	3500k	> 80	3,129	25	125	120-277	0.21	0.10	0.09	> 90%	< 20%	122,000
BLCSELED3FT-25-4KMV-ET	4000k	> 80	3,250	25	130	120-277	0.21	0.10	0.09	> 90%	< 20%	122,000
BLCSELED3FT-25-5KMV-ET	5000k	> 80	3,334	25	133	120-277	0.21	0.10	0.09	> 90%	< 20%	122,000
BLCSELED4FT-32-35KMV-ET	3500k	> 80	3,811	32	119	120-277	0.25	0.13	0.11	> 90%	< 20%	122,000
BLCSELED4FT-32-4KMV-ET	4000k	> 80	4,224	32	132	120-277	0.25	0.13	0.11	> 90%	< 20%	122,000
BLCSELED4FT-32-5KMV-ET	5000k	> 80	4,256	32	133	120-277	0.25	0.13	0.11	> 90%	< 20%	122,000
BLCSELED8FT-65-35KMV-ET	3500k	> 80	8,450	65	130	120-277	0.54	0.27	0.23	> 90%	< 20%	122,000
BLCSELED8FT-65-4KMV-ET	4000k	> 80	8,580	65	132	120-277	0.54	0.27	0.23	> 90%	< 20%	122,000
BLCSELED8FT-65-5KMV-ET	5000k	> 80	8,645	65	133	120-277	0.54	0.27	0.23	> 90%	< 20%	122,000

¹ Color rendering index.

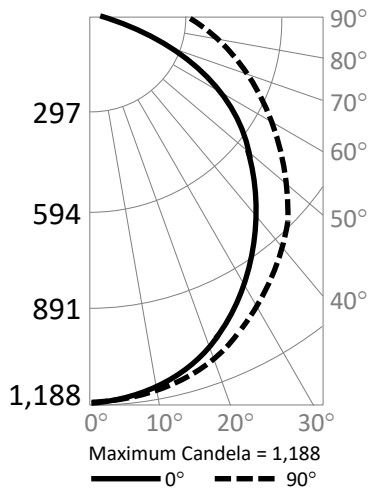
² All 50-60Hz.

³ Total harmonic distortion.

⁴ L₇₀ refers to the number of hours at which lumen output declines to 70% of the initial level. L₇₀ hours are IES TM21-11 calculated hours.

PHOTOMETRIC DATA

Model: **BLCSELED4FT-32-5KMV-ET (4,256 lumens)**



Candlepower Summary

	0°	90°
0°	1,188	1,188
10°	1,154	1,169
20°	1,064	1,112
30°	926	1,027
40°	758	921
50°	574	794
60°	391	667
70°	216	540
80°	70	427
90°	5	328

Zonal Lumen Summary

Zone	Lumens	% Fixture
0° - 10°	127	3.0%
0° - 20°	490	11.5%
0° - 30°	1,035	24.3%
0° - 40°	1,689	39.7%
0° - 50°	2,370	55.7%
0° - 60°	3,004	70.6%
0° - 70°	3,541	83.2%
0° - 80°	3,957	93.0%
0° - 90°	4,256	100.0%
90° - 180°	0	0%
0° - 180°	4,256	100.0%

Cone of Light

